
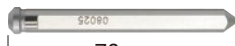


Specifications			
Model	Main unit	CLO-2725 (NN)	
	Battery Pack ^{*1}	BSL36A18	BSL36B18
	Battery Charger ^{*1}	UC18YSL3	
Battery Pack (Lithium-ion Battery) ^{*1}	Voltage	36 V DC	
	Battery Capacity	BSL36A18	BSL36B18
		2.5 Ah	4.0 Ah
Battery Charger ^{*1}	Power Source	220 - 240 V AC	
	Charging Time	BSL36A18	BSL36B18
		32 min	52 min
Hole Capacity	Cutter	Hole diameter	Plate Thickness
	One-touch Type JETBROACH 25L	12 to 27 mm dia.	6 to 25 mm
Max. Stroke		40 mm	
No-load Speed		820 min ⁻¹	
Cutter Position Adjustment	Pivot Side to Side	10 mm	
	Straight Front to Back	10 mm	
Magnet Holding Power		5500 N (561 kgf)	
Magnet Dimensions		65 x 145 mm	
Mass (Weight)		9.0 kg ^{*2}	
Accessories Included			
•Feed Handle Ass'y		•Cutting Oil (0.5 L)	
•Pilot Pin 08025 (A1)		•Lashing Strap	
•Oiler		•Spanner 14	
•Tube 4 x 7		•Spanner 7 x 9	
•Hex. Socket Screw Key 4		•Guard	
•Hex. Socket Set Screw with Dog Point 8 x 28			

*1 Battery Pack and Battery Charger are not included with the product

*2 Including Battery Pack and Feed Handle

One-touch Type JETBROACH							
Part No.	Size	Part No.	Size	Part No.	Size	Part No.	Size
TK01148	12 x 25	TK01711	17.5 x 25	TK01718	21 x 25	TK01725	24.5 x 25
TK01149	13 x 25	TK01712	18 x 25	TK01719	21.5 x 25	TK01726	25 x 25
TK01150	14 x 25	TK01713	18.5 x 25	TK01720	22 x 25	TK01727	25.5 x 25
TK01151	15 x 25	TK01714	19 x 25	TK01721	22.5 x 25	TK01728	26 x 25
TK01152	16 x 25	TK01715	19.5 x 25	TK01722	23 x 25	TK01729	26.5 x 25
TK01153	17 x 25	TK01716	20 x 25	TK01723	23.5 x 25	TK01730	27 x 25
		TK01717	20.5 x 25	TK01724	24 x 25		
Pilot Pin 06025S Part No. TK01710				Pilot Pin 08025(A1) Part No. TK01486			
							
76 mm				76 mm			

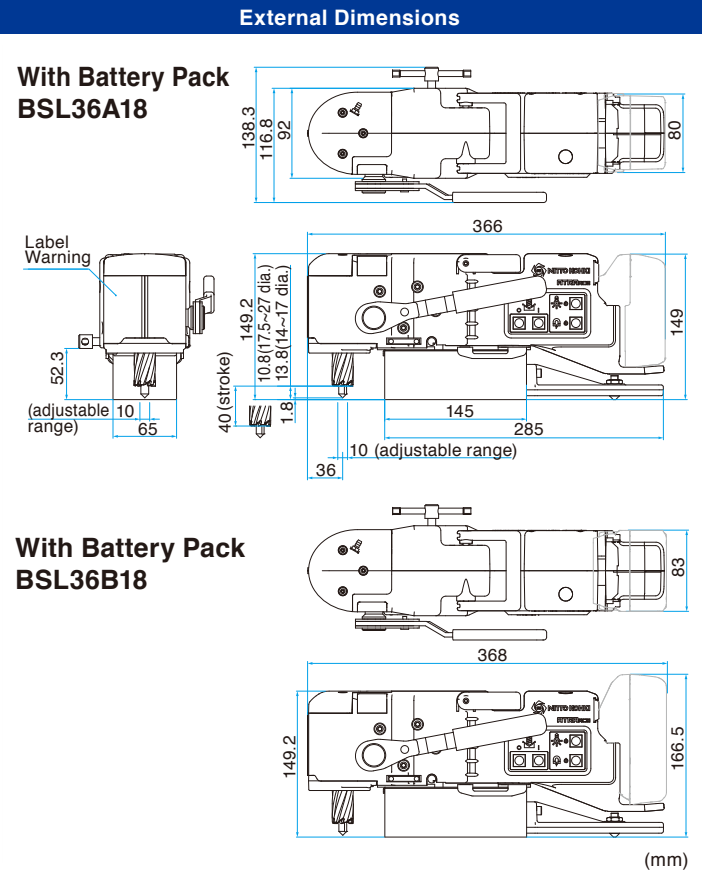
Optional Accessories		
		
Carry Case Part No. TB10881	Battery Pack (Lithium-ion Battery) Model : BSL36A18, BSL36B18	Battery Charger Model : UC18YSL3

- Use the battery (Model: BSL36A18/BSL36B18) and charger (Model: UC18YSL3) manufactured by Koki Holdings Co., Ltd.
- Read the instruction manual of Koki Holdings Co., Ltd., on how to use the battery and charger.
- For further information about the battery and charger, contact Koki Holdings Co., Ltd.



Li-ion

Lithium-ion batteries are required to be recycled; never discard a lithium-ion battery in the waste. Please contact your local sales office or community recycling program for information on properly disposing of lithium-ion batteries.



CORDLESS MODEL

ATRACE

Model **CLO-2725 (NN)**

On-site drilling goes cordless

36v
battery-powered model



YouTube



NITTO KOHKI CO., LTD.

Head Office

9-4, Nakaikagami 2-chome, Ohta-ku, Tokyo 146-8555, Japan

Tel : +81-3-3755-1111 Fax : +81-3-3753-8791

E-mail : overseas@nitto-kohki.co.jp



Web www.nitto-kohki.co.jp/e/

DISTRIBUTED BY

A powerful battery
of 36 V / 2.5 Ah adopted

LED light useful for drilling

Total height of 150 mm
to fit into 200 mm height I-beams

Various safety functions

*Plate thickness detection, drilling load detection and main unit lifting detection assists drilling.



- Battery Pack, Battery Charger and Carry Case are not included.
- Use the battery (Model: BSL36A18/BSL36B18) and charger (Model: UC18YSL3) manufactured by Koki Holdings Co., Ltd.
- Read the instruction manual of Koki Holdings Co., Ltd., on how to use the battery and charger.
- For further information about the battery and charger, contact Koki Holdings Co., Ltd.

New cordless ATRA ACE A new choice for on-site drilling

Compared with the conventional cordless model (CLA-2720),
Approximately **20%** more holes
drilled on a single charge.
Approximately **40%** shorter drilling time.

Compared with the conventional model (CLA-2720)

Number of processable holes



Increased by about **20%**

Drilling time



Reduced by about **40%**

*Drilling conditions
Plate thickness 16 mm,
Hole diameter 22 mm,
Material JIS SS400

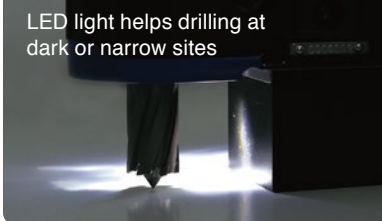
Wide range of drilling sizes

12 to 27 mm diameter of JETBROACH 25L can be used



LED light equipped

LED light helps drilling at dark or narrow sites



High-efficiency brushless motor

Brushless motor adopted for quick drilling work. **About 60 holes** of diameter 18 mm can be drilled on 6 mm thick mild steel plates with a fully charged battery. (Using battery BSL36A18)

CLO-2725 Special Cutting Oil 0.5 L

Dedicated cutting oil for smooth drilling PN:TB11454



For drilling on various sites

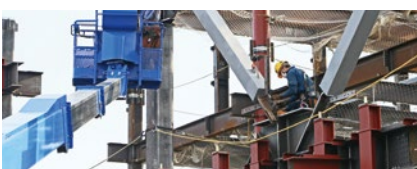
For bridge repair work

Hole diameter up to 27 mm dia., which is popular in bridge repair.



For drilling at high places

Suitable for sites with no power source



For drilling at dark or narrow sites

Good for drilling at dark or narrow sites due to its LED light



ATRAACE CORDLESS MODEL CLO-2725 (NN)

*Battery Pack, Battery Charger and Carry Case are not included.

Powerful battery

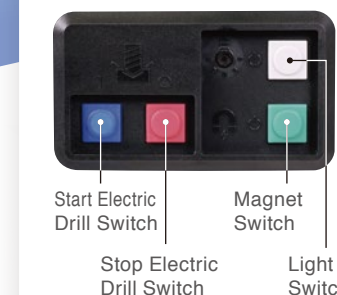
36 V
powerful battery adopted.
Fast charge for 32 minutes*
*BSL36A18 (2.5 Ah)



Various functions

User-friendly switch

Simple switch layout prevents misoperation.



Slow stop

If an overload is detected continuously during drilling, the motor will stop slowly to prevent JETBROACH cutter from being damaged.



Drilling position adjustment

The drill position can be adjusted up to 10 mm travel on each axis straight front to back and pivot side to side.



Reversible feed handle

The feed handle can be positioned on the right or left hand side.



Height
150
mm

Maximum hole diameter
27
mm

Maximum plate thickness
25
mm

Various safety functions

Plate Thickness Detection

Detects the thickness of the workpiece and shows if the motor can be operated or not.

●GREEN	●YELLOW	●RED BLINKING
Electric drill is operable	Electric drill is operable (The plate thickness is close to minimum size.)	Electric drill is inoperable (The plate thickness is under minimum size.)

Drilling Load Detection

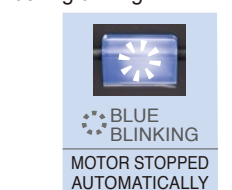
Detects the load on the motor

Efficient Load		Caution*		
●GREEN	●YELLOW	●RED	●RED BLINKING	●WHITE BLINKING
LIGHT LOAD	MEDIUM LOAD	OVERLOAD		MOTOR STOPPED BY OVERLOAD

* If an excessive load is maintained during the cut, the motor will shut-off to prevent damage to the motor.

Main Unit Lifting Detection

Detects main unit lifting and low magnetic force during drilling



*When main unit lifting or low magnetic force are detected, the motor will stop automatically.